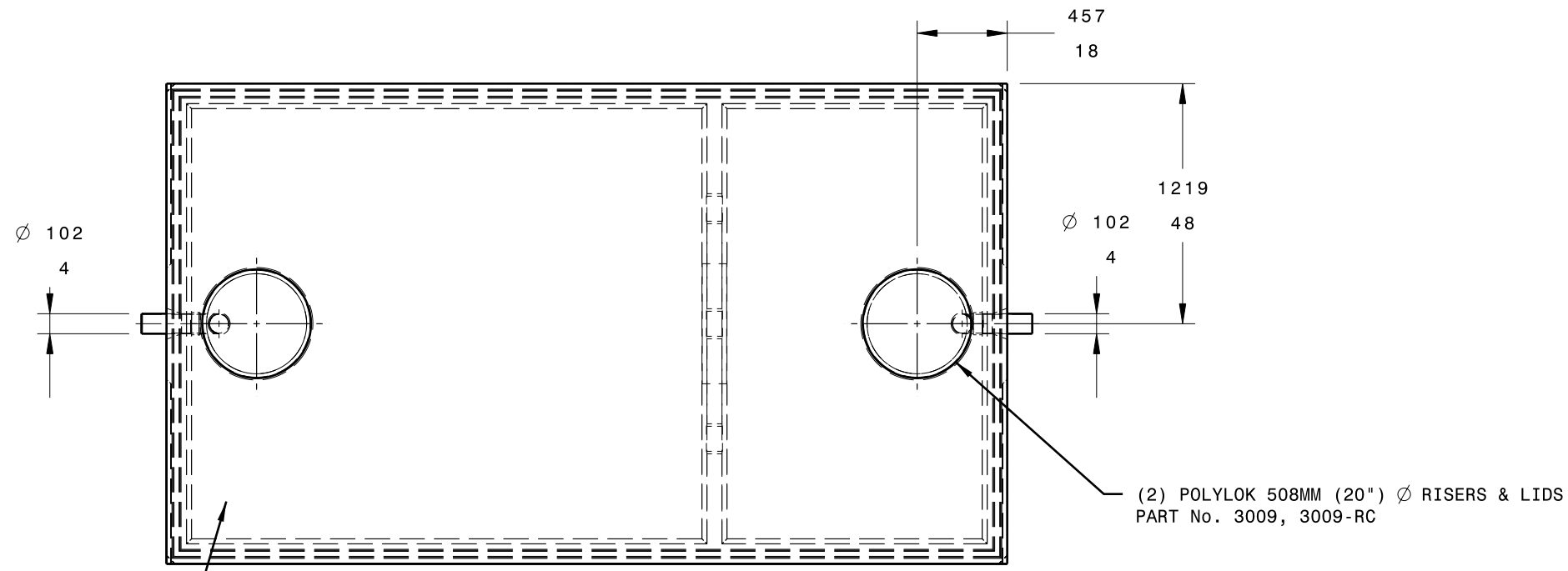
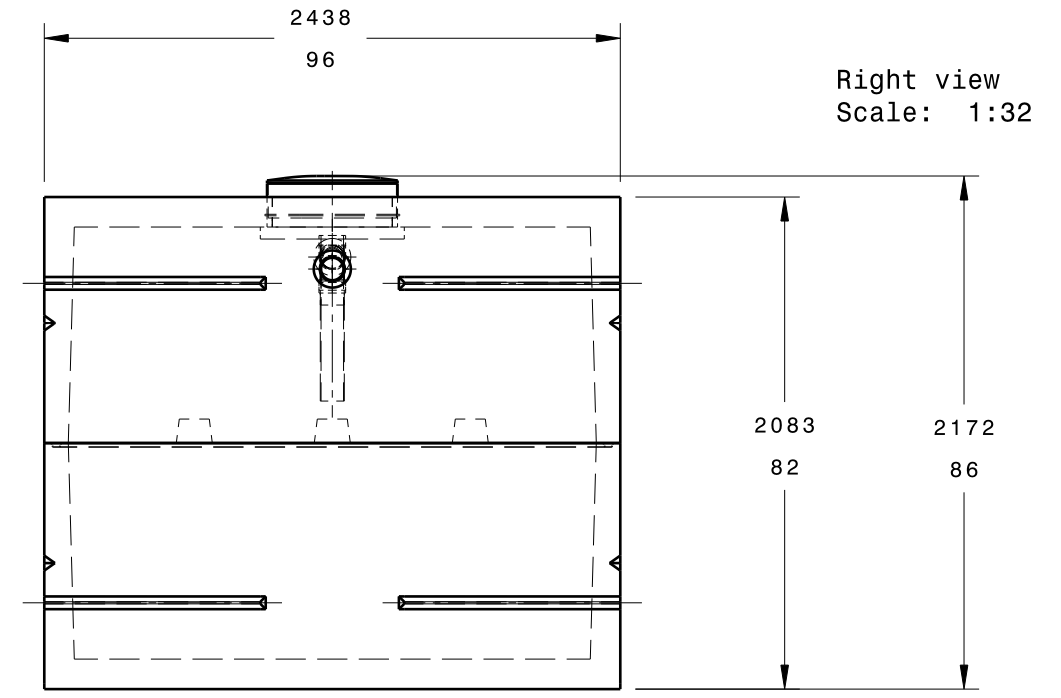
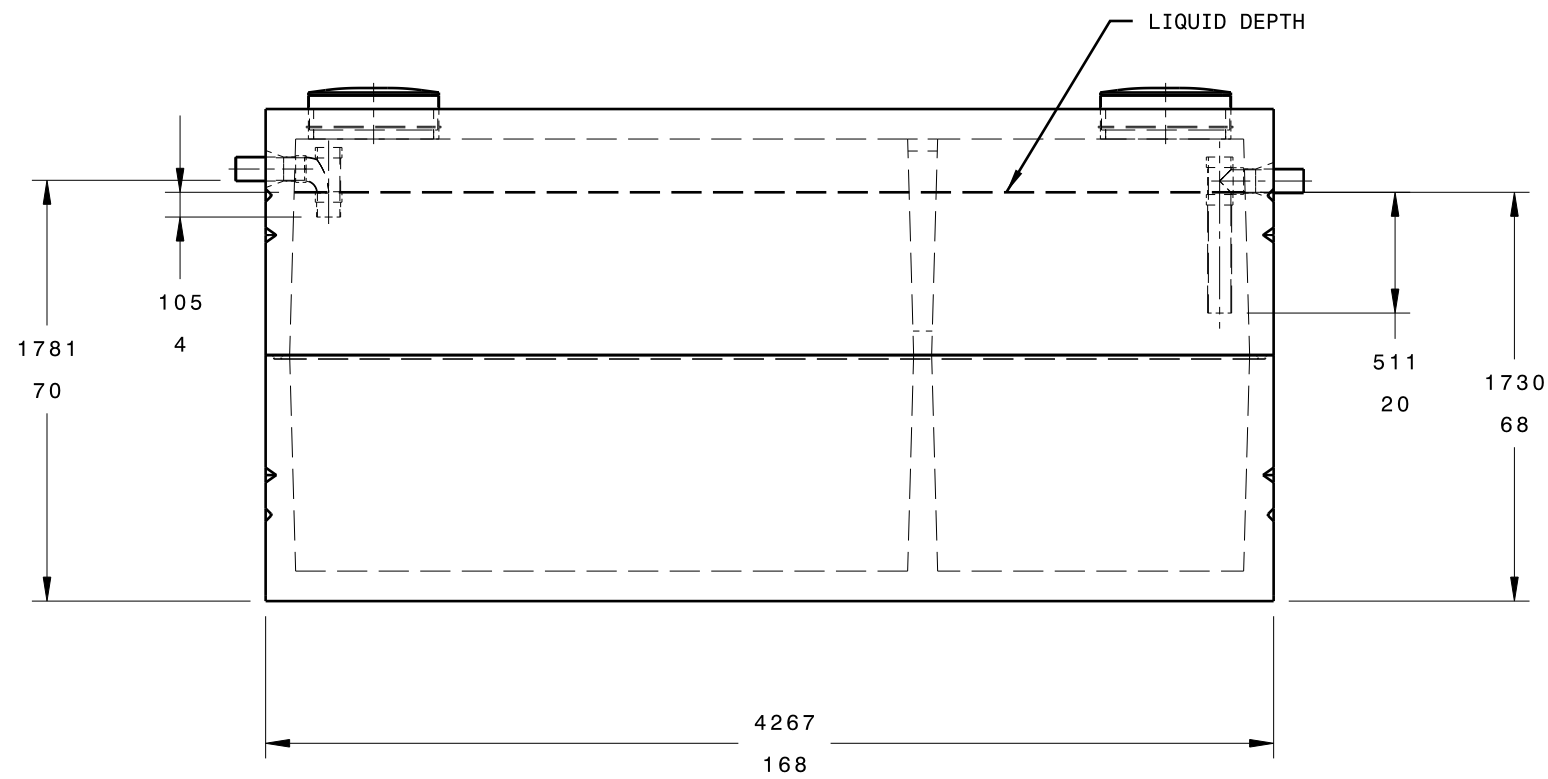


6 F E D C B A 6



NOTE:
MATERIAL: CONCRETE 32MPa @ 28 DAYS
REINFORCEMENT: CAN/CSA-G30.18
CONSTRUCTION: MEETS CSA B66-05
WEIGHT: TOP 6550 kg (14450 lbs)
WEIGHT: BOTTOM 6700 kg (14700 lbs)
VOLUME: 3070 Imp. Gal. @ 63" LIQUID DEPTH
MONOLITHIC CAST CHAMBER DIVIDER
INLET/OUTLET: CAST-IN 102MM (4") Ø PVC COUPLER
BAFFLE: 102MM (4") Ø PVC PIPE
JOINT: TONGUE AND GROOVE, MASTIC ROPE SEALANT
ASSEMBLY: AT JOB SITE
MAX. BURIAL DEPTH: 1.2M (47.25")
DIMENSIONS: MM
INCHES



DESIGNED BY: WJ Reid		REID'S PRECAST CEMENT PRODUCTS LTD R.R. 4 LANGTON, ON NOE 1G0 (519) 875-2121		I	-
DATE: 08/02/2007				H	-
CHECKED BY:		13650 LITER (3000 IMP. GAL.) SEPTIC TANK		G	-
DATE:				F	-
SIZE B		13650T		E	-
SCALE 1:32	WEIGHT (kg)			D	-
DRAWING NUMBER		13650T		C	-
SHEET				B	-
This drawing is our property; it can't be reproduced or communicated without our written agreement.		SHEET 1 / 1		A	-

1 F A 1