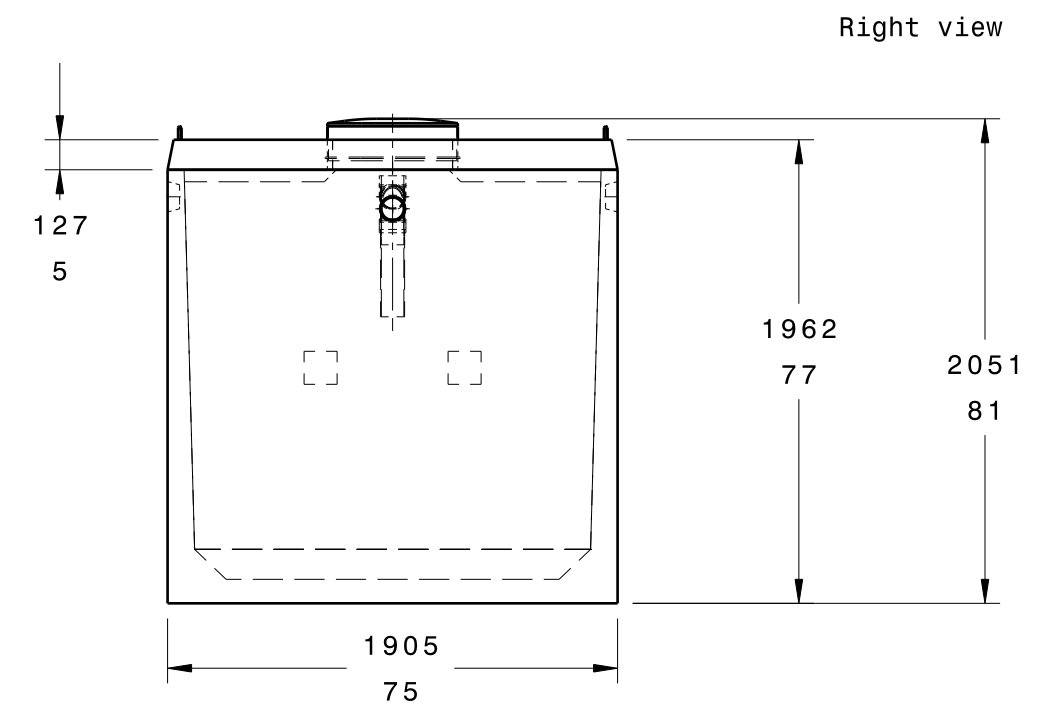
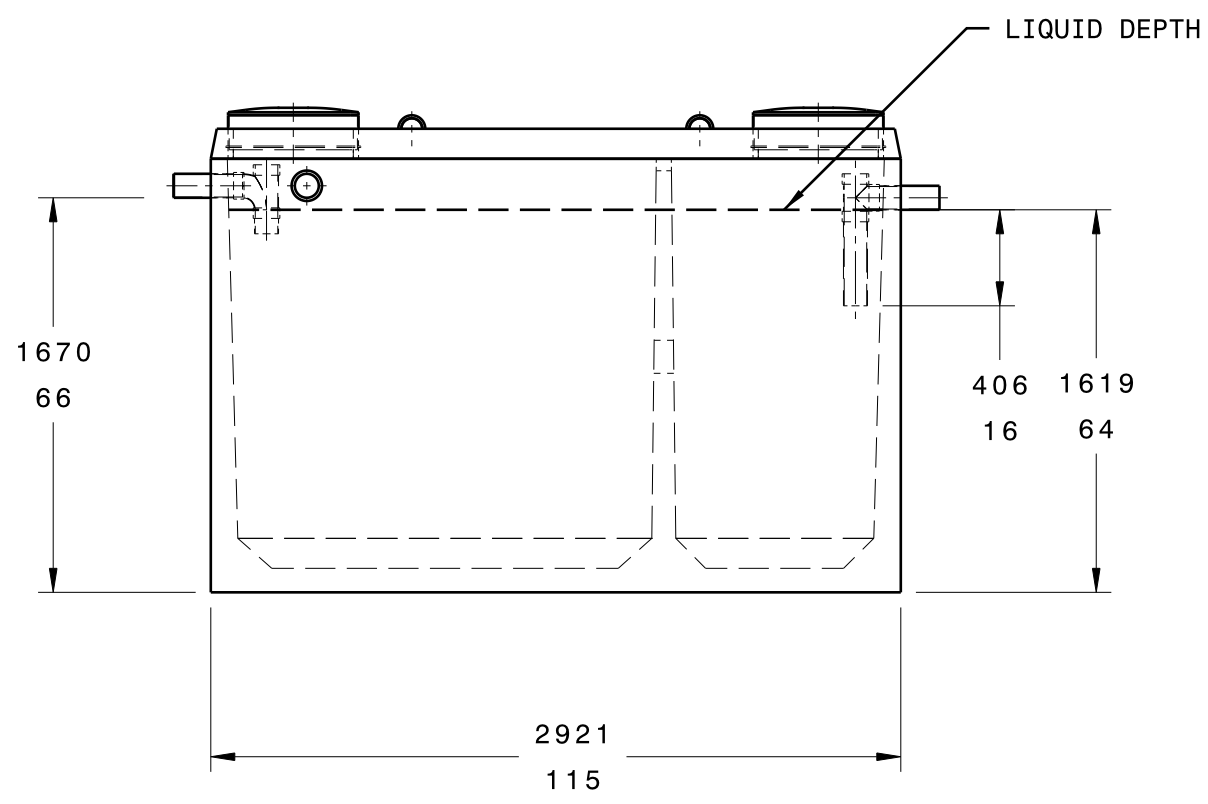
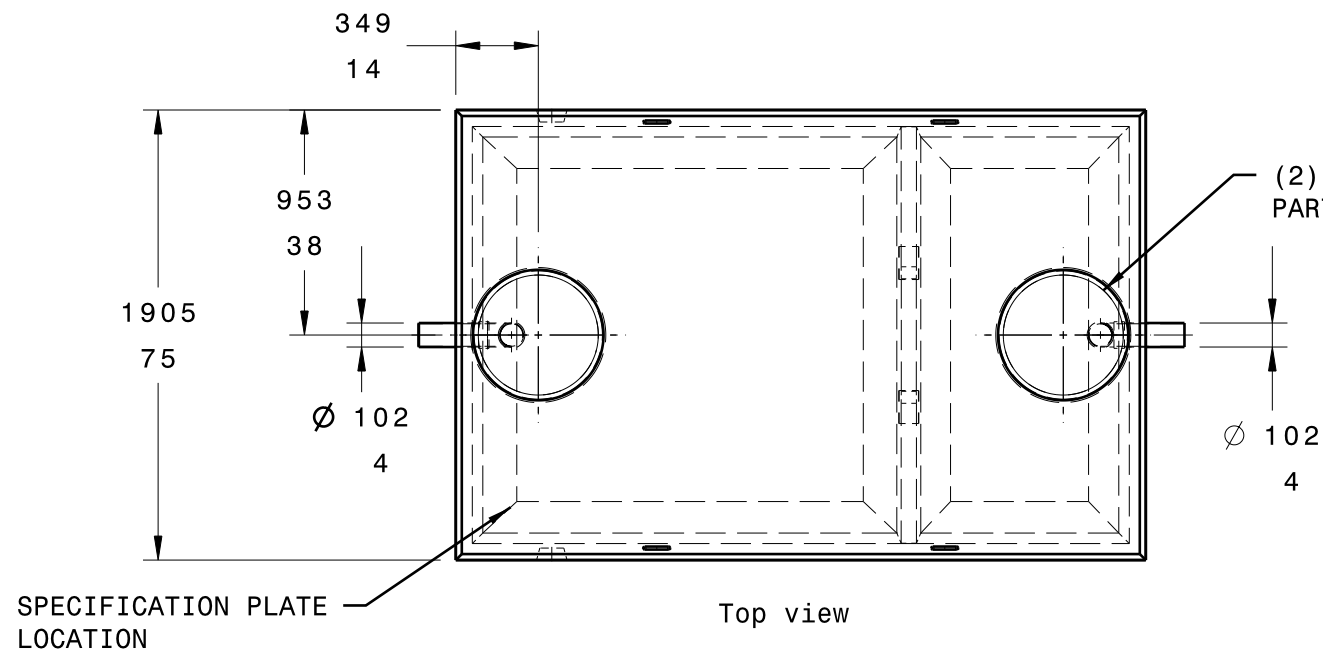


**NOTE:**  
**MATERIAL: CONCRETE 32MPa @ 28 DAYS, NON-SULFATE**  
**AIR ENTRAINMENT: 5-7%**  
**REINFORCEMENT: CAN/CSA-G30.18**  
**CONSTRUCTION: MEETS CSA B66-05**  
**TOTAL WEIGHT: 7000 kg (15435 LBS)**  
**TOTAL VOLUME: 6900 L**  
**MONOLITHIC CAST CHAMBER DIVIDER**  
**INLET/OUTLET: CAST-IN 102mm (4") Ø GASKETED PVC COUPLER**  
**BAFFLE: 102MM (4") Ø PVC**  
**JOINT: N/A**  
**ASSEMBLY: AT FACTORY**  
**MAX. BURIAL DEPTH: 1.2M (47.25")**  
**ALL DIMENSIONS IN MM**  
**INCHES**



DESIGNED BY: WJ Reid		<b>REIDS PRECAST CEMENT PRODUCTS LTD</b> R.R. 4 LANGTON, ON NOE 1G0 (519) 875-2121		I	-
DATE: 1/11/2007				H	-
CHECKED BY:		<b>6900 LITRE (1500 IMP GAL) SEPTIC TANK</b>		G	-
DATE:				F	-
SIZE: <b>B</b>				E	-
SCALE: <b>1:32</b>	WEIGHT (kg)	DRAWING NUMBER: <b>6900T</b>	SHEET: <b>1/1</b>	D	-
This drawing is our property; it can't be reproduced or communicated without our written agreement.				C	-
				B	-
				A	-

6  
5  
4  
3  
2  
1

6  
5  
4  
3  
2  
1

F E D C B A

F A